



STROM • SICHER • SCHALTEN

DRIESCHER
Intelligent outdoor - switch-disconnector
FLa 15/97-6400

- Outdoor
- Rated voltage 36 kV

DRIESCHER
Moosburg



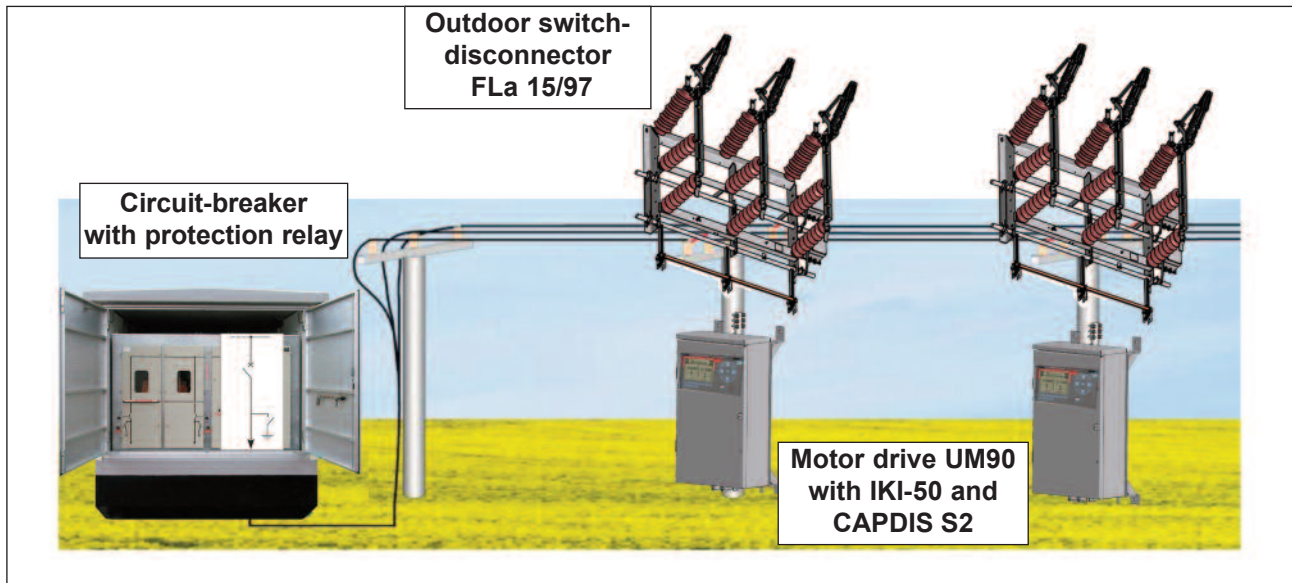


Fig. 1: Diagrammatic view

Short description

- „Break-switch“ / Intelligent outdoor switch-disconnector 36 kV
- Optimizing availability and reducing black-out times in distribution networks

Operating principle

The motor-actuated 3-pole outdoor switch-disconnector FLA 15/97-6400 is able to monitor the feeder with in the isolators built-in sensors for voltage and current for faults.

Fault case 1:

Occurs in the lower-level supply network (stub) a permanent fault current (e.g. short circuit or earth fault) and then takes the shutdown by the upstream primary protection, the GRID-INSPECTOR IKI-50 (mounted in the motor drive UM90) is excited and dropped the switching command to the switch-disconnector.

Then, the FLA 15/97-6400 automaticall disconnects the faulty feeder (dead) from the healthy power supply. A short time later, a reclosing of healthy power supply to take place and the faulty feeder of a review are subjected

Fault case 2:

Occurs in the lower-level supply network (stub) a short-time fault current (e.g. lightning strike) available is automatically shut down (short circuit interruption) by the upstream primary protection. Since this is not a permanent fault current, the IKI-50 in the motor drive UM90, is only excited, but it was canceled and no switching command to the FLA 15/97-6400. The outdoor switch-disconnector stays ON.



Fig. 2: GRID-INSPECTOR IKI-50

Fault detection

- Short-circuit (directional, non-directional)
- Earth fault detection - three independant algorithms (directional, non-directional)
- Suitable for all kind of neutral eathing systems
- Failure forecast functionality

Technical data

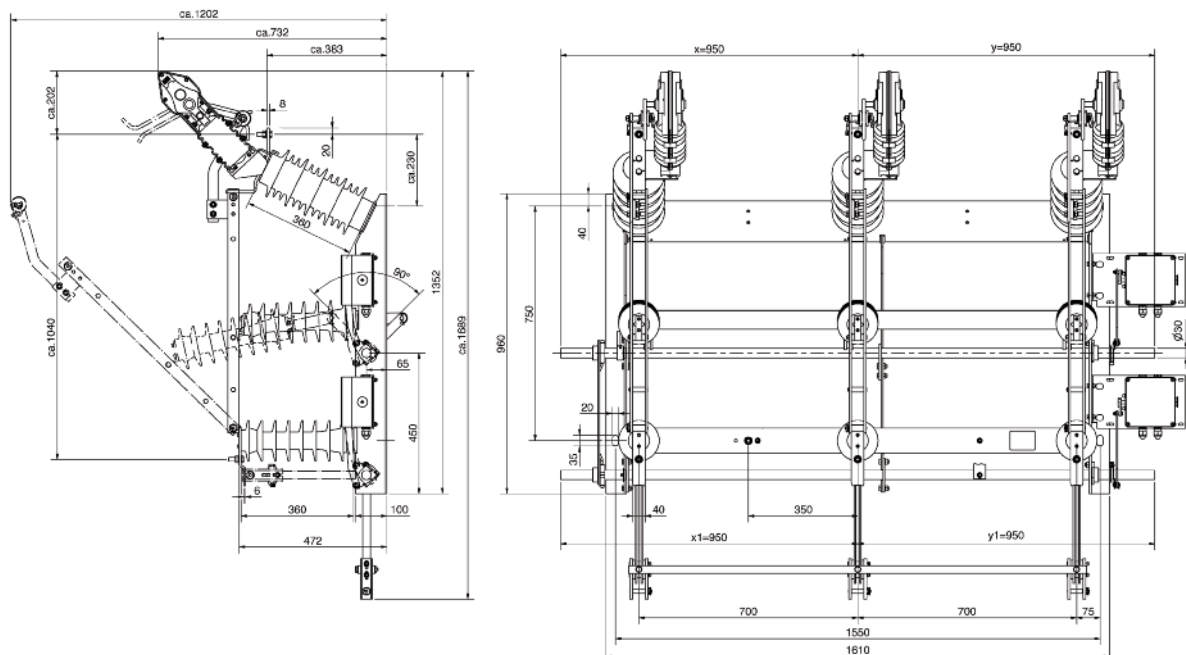
System

• Rated voltage U_r	36 kV
• Monitoring voltage	capacitive
• Monitoring current	inductive
• Sensitive short-circuit detection	adjustable (100 - 1000 A)
• Time short-circuit detection	adjustable (60 - 200 ms)
• Breaking time for testing shutdown	adjustable (standard value 10 s)
• Voltage sensitive for testing shutdown	adjustable (standard value 30% U_n)
• Auxilliary energy IKI-50	24...230 VAC/DC
• Temperature range IKI-50	-25°...55° C

FLa 15/97-6400

• Rated voltage	U_r	36 kV
• Rated current	I_r	630 A
• Rated short-time withstand current, 3s	I_k	25 kA
• Rated short-circuit making current	I_{ma}	16 kA
• Rated peak withstand current	I_p	40 kA
• Rated lightning impulse withstand voltage	U_p	170 kV

Drawing FLa 15/97-6400



STROM • SICHER • SCHALTEN

Dimensions, weights, diagrams and descriptions in this brochure are non-binding. Subject to change without notice.

Printed on chlorine free bleached paper. For nature's sake.



**Elektrotechnische Werke
Fritz Driescher & Söhne GmbH**
Driescherstr. 3
D-85368 Moosburg
Tel.: +49 8761 681-0
Fax: +49 8761 681-137
E-Mail: infoservice@driescher.de
www.driescher.de

DRIESCHER
Moosburg

