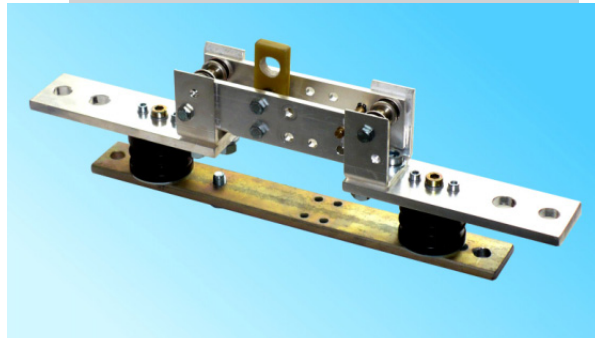


## DRIESCHER - Indoor Disconnecter for Railway Electrifications

- 1-pole design
- Nominal voltage  $U_n$   
1,5 kV DC
- Rated current  $I_{Ne}$   
1250 A and 2000 A



# ITr

ELEKTROTECHNISCHE WERKE  
FRITZ DRIESCHER & SÖHNE GMBH

D-85366 MOOSBURG • TEL. +49 87 61 6 81-0 • FAX +49 87 61 68 12 30  
<http://www.driescher.com> [infoservice@driescher.de](mailto:infoservice@driescher.de)



## General

The single-pole indoor disconnectors mentioned in this list are suitable for railway supply systems. These are switches of category I according to EN 50123-3, operating class VII according to EN 50329, determined for the installation in indoor switchgears.

The disconnectors are equipped with an aperture for manual operation by means of an actuating rod. The disconnectors 2000 A can be equipped with a motor actuator.

The disconnectors are determined for vertical mounting with a rotary contact downwards.

All live parts are made of E-Cu and are hot-galvanized. The cross sections of all live parts are sufficiently sized. Sufficient contact pressure is ensured through stainless pressure springs which also allow a proper operation all over the whole operating life.

A higher corrosion capability is reached through hot-galvanization.

Each disconnector is fitted with a earthing clamp.

The **disconnectors 1250 A** can be delivered in the following designs:

- I - with a flat, straight terminal pad
- T - with a flat, T-shaped terminal pad

Optionally, it is also possible to equip the disconnectors with position switches for the indication of the switch position (... IS or ...TS).

The **disconnectors 2000 A** can be delivered in the following designs:

- R - for manual operation
- M - for switches with motor actuator

The motor actuators can be delivered for rated voltages 24 V, 60 V, 110 V and 220 V DC and also for 230 V AC. This design is equipped with a position switch.

## Operating conditions

The switches are suitable for the use under normal operating conditions according to EN 60721 and EN 50123-1.

They can be used up to a height of 1400 m above sea-level. In case of an installation over 1400 m above sea-level, the rated isolating level must be adapted.

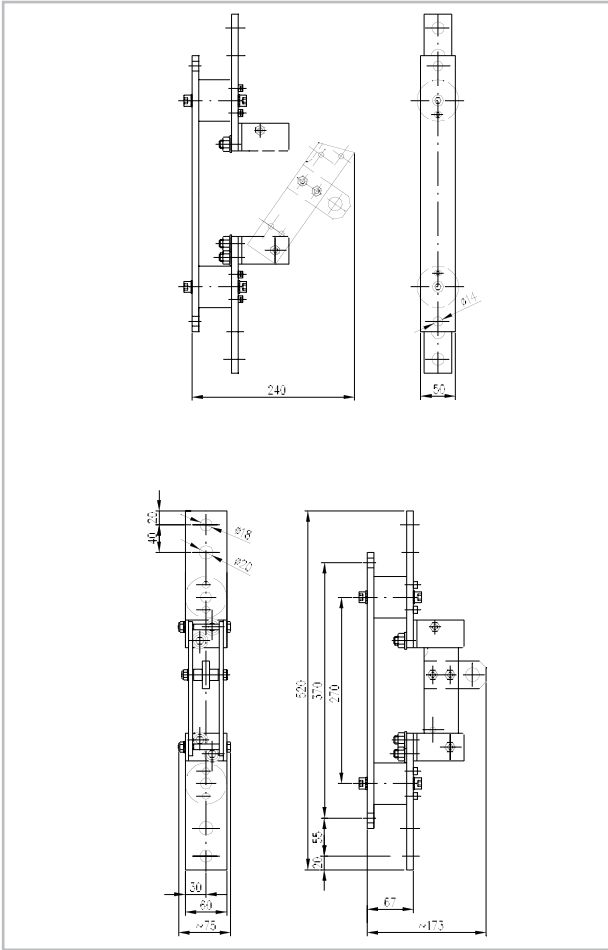
The following limits concerning the surrounding temperature are valid:

Lowest surrounding temperature:	- 25 °C,
Highest average value over 24 h max.:	+ 35 °C,
Highest surrounding temperature:	+ 40 °C.

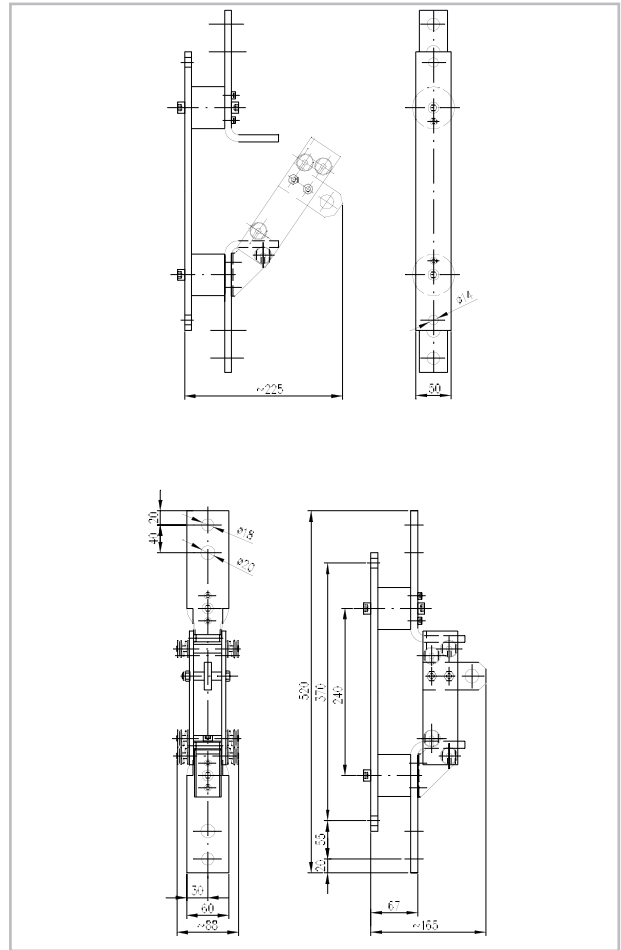
## Technical Data

Switch type	ITr 1,5-1250/40	ITr 1,5-1250/50	ITr 1,5-2000/80
Nominal voltage $U_n$	1,5 kV DC		1,5 kV DC
Rated operating current $I_{Ne}$	1250 A		2000 A
Permanent ampacity	1600 A		2560 A
Ampacity in the time of 2 hours	1875 A		3000 A
Ampacity in the time of 15 sec	5625 A		9000 A
Rated voltage $U_{Ne}$	1,8 kV		1,8 kV
Rated Insulation level $U_{Nm}$	3 kV		3 kV
Rated impulse withstand voltage - Phase to Earth $U_{Ni}$	15 kV		15 kV
Rated impulse withstand voltage - Open Gap $U_{Ni}$	18 kV		18 kV
Power-frequency withstand voltage - Phase to Earth $U_a$	6,9 kV		6,9 kV
Power-frequency withstand voltage - Open Gap $U_a$	8,3 kV		8,3 kV
Rated short time current $I_{Ncw}$	40 kA	50 kA	80 kA
Weight (for 2000 A without/with motor actuator)	6,5 kg	6,9 kg	14,5 / 21,5 kg
Mechanical life	10.000 CO		

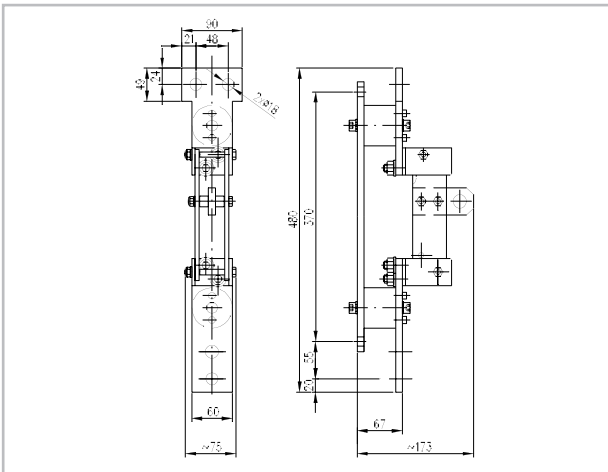
**ITr 1,5-1250/40-I and T • ITr 1,5-1250/50-I and T**



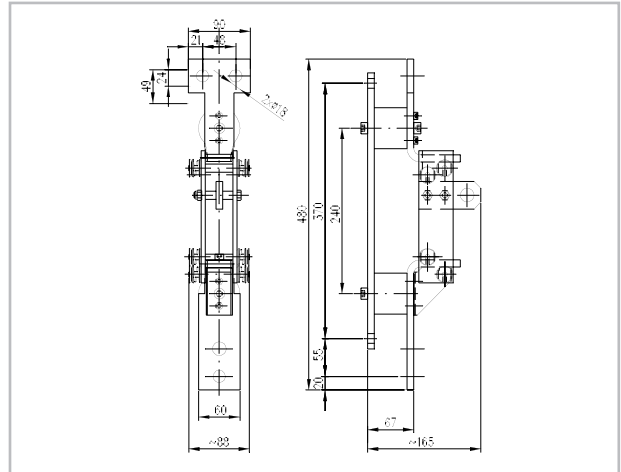
*ITr 1,5-1250/40-I*



*ITr 1,5-1250/50-I*



*ITr 1,5-1250/40-T*

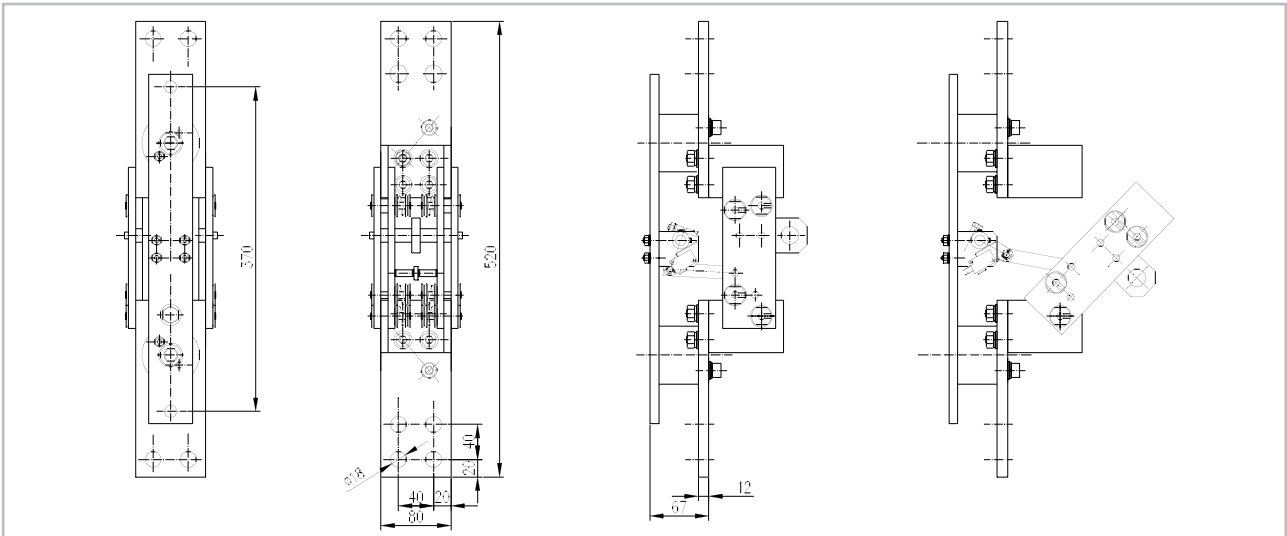


*ITr 1,5-1250/50-T*

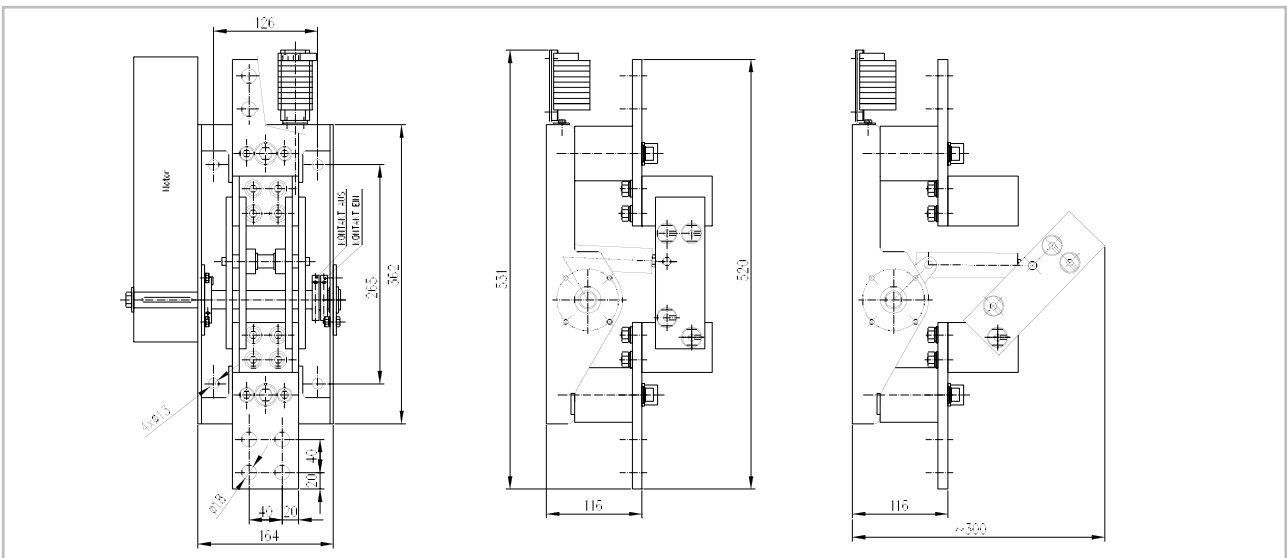
Type / Design	Order-No.
ITr 1,5-1250/40-I	732 40100
ITr 1,5-1250/40-IS	732 40110
ITr 1,5-1250/40-T	732 40200
ITr 1,5-1250/40-TS	732 40210

Type / Design	Order-No.
ITr 1,5-1250/50-I	732 50100
ITr 1,5-1250/50-IS	732 50110
ITr 1,5-1250/50-T	732 50200
ITr 1,5-1250/50-TS	732 50210

**ITr 1,5-2000/80-R • ITr 1,5-2000/80-M**



*ITr 1,5-2000/80-R*



*ITr 1,5-2000/80-M*

Type	Design	Order-No.
ITr 1,5-2000/80-R	Manuel operated	732 60100
ITr 1,5-2000/80-RS	Manuel operated, with auxiliary switch	732 60101
ITr 1,5-2000/80-M	Motor operated, with auxiliary switch	732 60110

Dimensions, weights, diagrams and descriptions in this brochure are non-binding. Subject to change without notice.

**switching • electricity • safely**

Printed on chlorine free bleached paper. For nature's sake.

**ELEKTROTECHNISCHE WERKE  
FRITZ DRIESCHER & SÖHNE GMBH**

D-85366 MOOSBURG • TEL. +49 87 61 6 81-0 • FAX +49 87 61 68 12 30  
http://www.driescher.com info@service@driescher.de

